



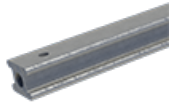
Product Family Söll MultiRail® Aluminium System

The Söll MultiRail® Aluminium Horizontal Rail System conforms to the latest European standard EN 795:2012 type D and CEN/TS 16415:2013 regulations for horizontal anchor devices. Söll MultiRail Aluminium is not only for installation at foot level or overhead but can also be installed sideways for use as a handrail. The high quality aluminium system provides the best price-quality solution for low-corrosive work environments.



Product Numbers & Ordering Information

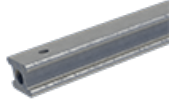
| Product Numbers | Details |
|---|---|
|  26876 / 1032533 | Anchor rail - sold per meter The available standardised lengths are 3m and 6m but it can also be supplied on demand in any length from 20cm up to 6m. |
|  26871 / 1032531 | Anchor rail - Standard length 3000mm The available standardised lengths are 3m and 6m but it can also be supplied on demand in any length from 20cm up to 6m. |
|  26858 / 1032532 | Anchor rail - Standard length 6000mm The available standardised lengths are 3m and 6m but it can also be supplied on demand in any length from 20cm up to 6m. |
|  27131 / 1032540 | Anchor rail bended with max. angle of 15° - sold per meter A curved version with radius > 2000 mm can be mounted either upward or sideward. |
|  26874 / 1032536 | End rail - sold per meter The available standardised lengths are 3m and 6m but it can also be supplied on demand in any length from 20cm up to 6m. |
|  26872 / 1032534 | End rail - Standard length 3000mm The available standardised lengths are 3m and 6m but it can also be supplied on demand in any length from 20cm up to 6m. |



26861 / 1032535

End rail - Standard length 6000mm

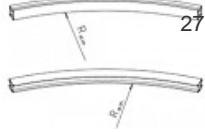
The available standardised lengths are 3m and 6m but it can also be supplied on demand in any length from 20cm up to 6m.



27133 / 1032543

End rail bended with max. angle of 15° - sold per meter

A curved version with radius > 2000 mm can be mounted either upward or sideward.



27130 / 1033151

Bending vertical and horizontal profile

Possible for Anchor rail and End rail.



28004 / 1035230

Connector

Rail connector (stainless steel) + Clamp (Aluminium)



26886 / 103538

End-stop without exit

Rail end-stop without exit.



26916 / 1032539

End-stop with exit

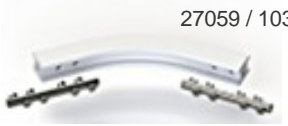
Rail end-stop with exit.



27058 / 1032541

Horizontal curve

Horizontal curve 90° aluminium anodized, incl. rail connectors.



27059 / 1032542

Horizontal curve

Horizontal curve x° aluminium anodized, incl. rail connectors.



27060 / 1032544

Vertical curve

Vertical curve 90° aluminium anodized, incl. rail connectors.



27061 / 1032545

Vertical curve

Vertical curve x° aluminium anodized, incl. rail connectors.



26903 / 1032546

Horizontal track change

T-junction aluminium anodized.



26914 / 1032547

Horizontal track change












X-junction aluminium anodized.



17489 / 1013483

Bracket 1, stainless steel

Teflon inserts allow the rail to glide smoothly inside the brackets. The rail is not subject to any constraint and therefore compensates for thermal expansion. Customised intermediate anchors can be provided upon request.

| | | |
|---|-----------------|---|
|  | 20168 / 1029717 | <p>Bracket 1 with locking screw M6, stainless steel Teflon inserts allow the rail to glide smoothly inside the brackets. The rail is not subject to any constraint and therefore compensates for thermal expansion. Customised intermediate anchors can be provided upon request.</p> |
|  | 17112 / 1013513 | <p>Bracket 2, stainless steel Teflon inserts allow the rail to glide smoothly inside the brackets. The rail is not subject to any constraint and therefore compensates for thermal expansion. Customised intermediate anchors can be provided upon request.</p> |
|  | 20167 / 1029723 | <p>Bracket 2 with locking screw M6, stainless steel Teflon inserts allow the rail to glide smoothly inside the brackets. The rail is not subject to any constraint and therefore compensates for thermal expansion. Customised intermediate anchors can be provided upon request.</p> |
|  | 21031 / 1013592 | <p>Bracket 5, stainless steel Teflon inserts allow the rail to glide smoothly inside the brackets. The rail is not subject to any constraint and therefore compensates for thermal expansion. Customised intermediate anchors can be provided upon request.</p> |
|  | 21677 / 1013601 | <p>Bracket 7, stainless steel Teflon inserts allow the rail to glide smoothly inside the brackets. The rail is not subject to any constraint and therefore compensates for thermal expansion. Customised intermediate anchors can be provided upon request.</p> |
|  | 21524 / 1013600 | <p>Tube clamp Teflon inserts allow the rail to glide smoothly inside the brackets. The rail is not subject to any constraint and therefore compensates for thermal expansion. Customised intermediate anchors can be provided upon request.</p> |
|  | 17407 / 1013517 | <p>Closed runner Available in stainless steel with polyamide inlays to minimize friction and provide great gliding performance, it is fitted with a stainless steel connector. As wheels are not necessary, it is dirt-resistant as well as very light, only 400g. It can be removed from the system at the end-stop exit sections or remain permanently on the rail.</p> |
|  | 17792 / 1013518 | <p>Openable runner Available in stainless steel with polyamide inlays to minimize friction and provide great gliding performance, it is fitted with a stainless steel connector. As wheels are not necessary, it is dirt-resistant as well as very light, only 600g. By means of an easy to use opening and closing mechanism, it can be removed or attached anywhere along the rail offering more flexibility to the user during his work.</p> |
|  | 24168 / 1014601 | <p>Overhead runner Made from stainless steel with 4 load-bearing wheels and a swiveling stainless steel eye, the wheeled runner may only be used for overhead applications. The runner can pass horizontal curves. It can be used with a self retractable lifeline. The worker attached to the lifeline can cover a wide working zone.</p> |
|  | 26308 / 1032550 | <p>Lockable runner Made from stainless steel with an additional bolt to lock, this runner is ideal for use on rails attached to objects in motion such as those installed on trucks. The runner stays in place when the truck is driven.</p> |
|  | 26917 / 1032549 | <p>Drilling gauge for MultiRail Aluminium safety rails.</p> |



26990 / 1032548

ID plate
for MultiRail Aluminium horizontal anchor device (DE/EN/FR/ES).



27091

ID plate
for MultiRail Aluminium horizontal anchor device (EN/IT/NL).



27092

ID plate
for MultiRail Aluminium horizontal anchor device (FIN/SWE/NOR)

Overview

Key Features

Key features

The Söll MultiRail[®] Aluminium Horizontal Rail System conforms to the latest European standard EN 795:2012 type D and CEN/TS 16415:2013 regulations for horizontal anchor devices. Söll MultiRail Aluminium is not only for installation at foot level or overhead but can also be installed sideways for use as a handrail. The high quality aluminium system provides the best price-quality solution for low-corrosive work environments.

Söll MultiRail Aluminium System offers an adapted solution for any industrial building or wind energy turbine. The elegant design of the aluminium solution makes it an aesthetic safety solution for commercial and historical buildings.

Various fixation possibilities are available for different structures. Just a few bolts and tools are required for a quick and easy assembly of the rail system.

Söll MultiRail Aluminium provides fall protection for up to 6 workers across a maximum span of 6m, depending on the rail configuration. If a fall occurs, this effective system ensures that structural damage is prevented through energy absorption by the several intermediate brackets and the end-fixing devices.

Four different runners ensure smooth movement of the worker along the rail: closed runner for frequent use of the same rail, openable runner for flexible use on several rail systems, wheeled runner for overhead applications and a lockable runner for working situations where the shuttle should not move.

Robust rail system that is quick and easy to install

In case of a fall, the energy is reduced by the bending of the rail, thereby the structure remains protected. The low friction mounting brackets transmit in the event of a fall the absolute minimum impact to the structure. In conformity with the EN795:2012 standard, the rail can absorb forces up to 70 kg without permanent deformation.

The rail is not fixed into mounting brackets and therefore compensates for thermal expansion. Easy connection of curves, T- and X-junctions, allow the system to be easily customized to any structure.

A worker connected to the Söll MultiRail Aluminium system can pass safely along vertical sections up to 1 m high.

The Söll MultiRail Aluminium horizontal anchor device is often used in the following sectors:

- Flat or steep roofs
- Working platforms on masts and buildings
- Hangars, shipyards, cranes
- Industrial plants
- Wind nacelles
- Water treatment

Söll MultiRail Aluminium can also be used as an overhead solution in combination with a self retractable lifeline attached to a wheeled shuttle for example in following applications:

- Truck cleaning
- Maintenance

- Loading bay

Hazards

- Fall from height

Regulations

- Conforms to EN 795:2012 type D standard

Warranty Information

We sincerely believe that our fall protection equipment is the best in the world. Our products endure rigorous test to ensure that the fall protection equipment you trust is manufactured to the highest standards. Miller fall protection products are tested to withstand normal wear and tear, but are not indestructible and can be damaged by misuse. Our warranty does not apply to abusive treatment of the product. In the unlikely event that you should discover defects in either workmanship or materials, under our warranty of one year after delivery, we will repair or replace the product at our expense. If a replacement is necessary and your product is no longer available, a comparable product will be substituted. Should a product issue surface, contact us at +33 248 53 08 97 (France, Spain, Portugal, North Africa) or +49 9281 8302 0 (Northern and Central Europe, Italy). Manufacturing specifications are subject to change without notice.

Certifications

Conformity licence Söll MultiRail Aluminium_UK

http://www.honeywellsafety.com/Supplementary/Documents_and_Downloads/Fall_Protection/Permanent_Anchorage_Systems/4294982664/1033.aspx

Söll MultiRail Aluminium System conformity licence

Literature & Documents

Miller Systems brochure Söll MultiRail_UK

http://www.honeywellsafety.com/Supplementary/Documents_and_Downloads/Fall_Protection/Permanent_Anchorage_Systems/4294980488/1033.aspx

Söll MultiRail brochure

Technical_Data_Sheet_MultiRail Aluminium_UK

http://www.honeywellsafety.com/Supplementary/Documents_and_Downloads/Fall_Protection/Permanent_Anchorage_Systems/4294984462/1033.aspx

Söll MultiRail Aluminium System Technical Datasheets

SE 97

http://www.honeywellsafety.com/Supplementary/Documents_and_Downloads/Fall_Protection/Permanent_Anchorage_Systems/4294980499/1033.aspx

Söll MultiRail Aluminium System assembly, installation and operating instruction

user manual_Söll MultiRail closed glider_SE 26

http://www.honeywellsafety.com/Supplementary/Documents_and_Downloads/Fall_Protection/Permanent_Anchorage_Systems/4294984510/1033.aspx

user manual_Söll MultiRail closed glider_SE 26

user manual_Söll MultiRail openable glider_SE 27

http://www.honeywellsafety.com/Supplementary/Documents_and_Downloads/Fall_Protection/Permanent_Anchorage_Systems/4294984511/1033.aspx

user manual_Söll MultiRail openable glider_SE 27

user manual_Söll MultiRail overhead glider_SE 33

http://www.honeywellsafety.com/Supplementary/Documents_and_Downloads/Fall_Protection/Permanent_Anchorage_Systems/4294984512/1033.aspx

user manual_Söll MultiRail overhead glider_SE 33

Training & Proper Use

Proper product training and professional fall protection training is recommended. Refer to Product Use Instructions enclosed with products.

Additional Information

France, Spain, Portugal, North Africa : +33 248 53 08 97 and email : lignedevie.hsp@honeywell.com

Northern and Central Europe, Italy : +49 9281 8302 0 and email : scs-hof@honeywell.com

Technical Support

France, Spain, Portugal, North Africa : +33 248 53 08 97 and email : lignedevie.hsp@honeywell.com

Northern and Central Europe, Italy : +49 9281 8302 0 and email : scs-hof@honeywell.com