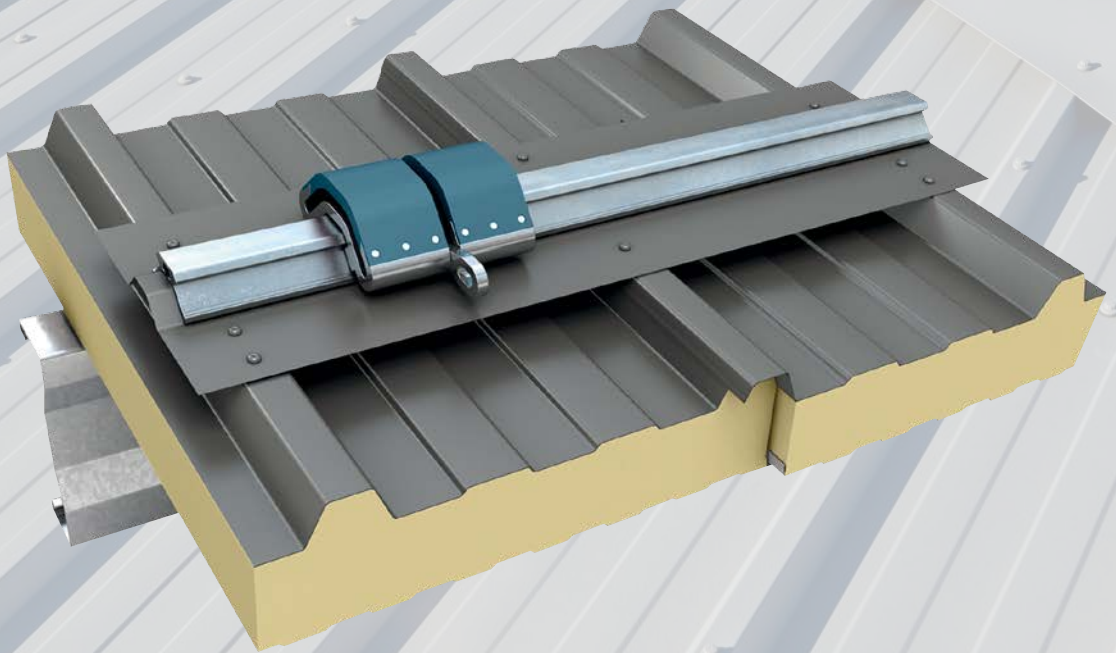


Insulated Panels  
UK & Ireland

Protected by



# Safetraxx Data Sheet



# Safetraxx

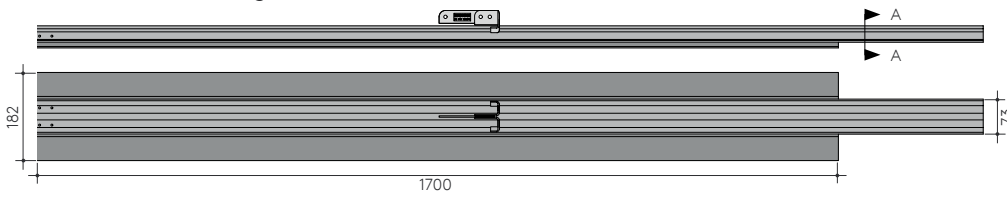
## Data Sheet

### General

Safetraxx is a robust personal fall protection system, comprising a high-grade precision-extruded aluminium rail. This flexible rail-based anchor system dissipates forces in a fall arrest event to minimise potential damage, and provide protection, across the whole roof area.

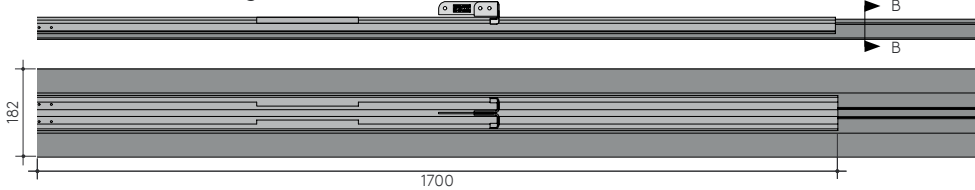
Featuring a discreet low profile rail, the Safetraxx system minimises aesthetic impact whilst also providing high resistance to wind and snow loading.

#### Standard Finisher Length



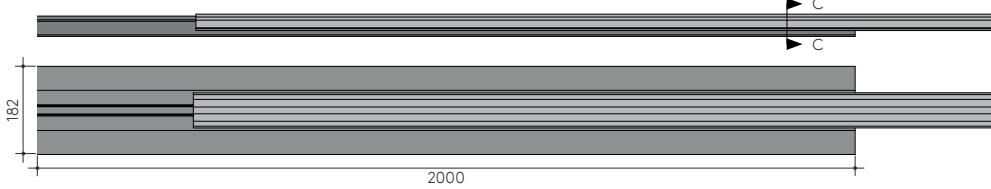
Section A-A

#### Standard Starter Length



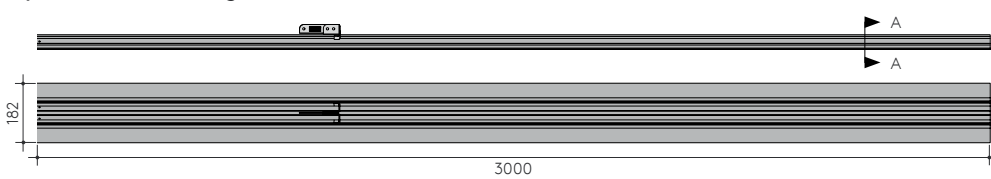
Section B-B

#### Standard Intermediate Length



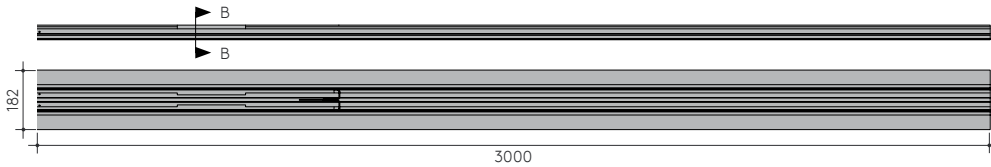
Section C-C

#### Hybrid Finisher Length



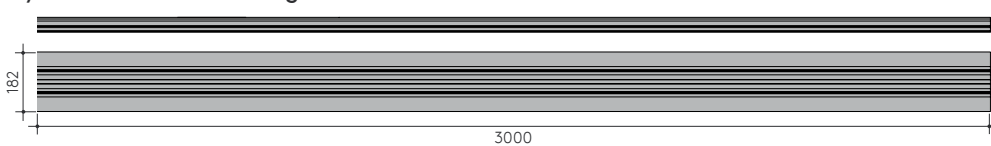
Section A-A

#### Hybrid Starter Length



Section B-B

#### Hybrid Intermediate Length



# Safetraxx

## Data Sheet

### Key Features

- Extensively tested with Kingspan Insulated Roof Panel systems.
- Compatible with Kingspan Insulated Panel and system warranty.
- High-grade steel and aluminium components, providing superior levels of corrosion resistance, durability and service life.
- Advanced fixing design allows efficient installation without the need to access the underside of the roof.
- Systems are fixed to the top sheet only, with no penetration of the insulation, eliminating thermal bridging.
- Low profile design for the installation and maintenance of Kingspan Rooftop Solar PV.
- Can be installed during or after construction.
- Modular system expandable in lengths of 2m.

### Available Lengths

- Standard Interlocking Safetraxx – 2m lengths
- Hybrid Safetraxx – 3m Lengths

### Materials

- Safetraxx Rail – aluminium alloy 6082
- Safetraxx Travelling Eye – aluminium alloy 6082
- Brackets (Karabiner and Securing Eye) – stainless steel grade 304

### Fixings

- 5.2mm aluminium bulbtite rivets (KS1000 RW, KS1000 LP)
- S-5-Z mini standing seam clamp (KS500 / 1000 ZIP)

### Dimensions & Weight

- Standard Interlocking Safetraxx – 2000 x 182 x 46 – 3.43kg/m
- Hybrid Safetraxx – 3000 x 182 x 46 – 2.55kg/m

### Fillers & Seals

- Butyl rubber sealant

### Delivery

All deliveries (unless indicated otherwise) are by road transport to the project site. Off-loading is the responsibility of the client.

### Site Installation Procedure

See relevant installation manual. Site instructions are available from the Kingspan Field Service Department.

### Standards

- BS EN ISO 9001
- BS EN ISO 14001
- BS OHAS 18001
- BS EN 795: D

### Guarantee

The Kingspan Warranty covers the structural performance for a period of up to 25 years. In order to retain warranty, product must be re-certified annually.

### Applications

Roofing Profile	KS1000 RW	KS1000 LP	KS1000 TD	KS500 / 1000 ZIP
Safetraxx Standard	✓	✓	-	✓
Safetraxx Hybrid	✓	-	-	-

Maximum allowable roof pitch 30°